

## FEATURES

- UL listed, File #S405, Standard #864 under the MPC-2000 System Control Unit
- CSFM, BSA & FM listed
- Dual supervised and power limited data transmission circuits
- Capacity for driving up to (4) remote annunciator/controller/driver units per circuit
- Capable of working wire distance up to 2000 ft. per circuit
- True multiplex format allows total flexibility in wire routing to and between remote units
- Compatible with addressable/analog system and post 9/91 conventional system (CU-2 equipped)
- IBEW/USA quality crafted

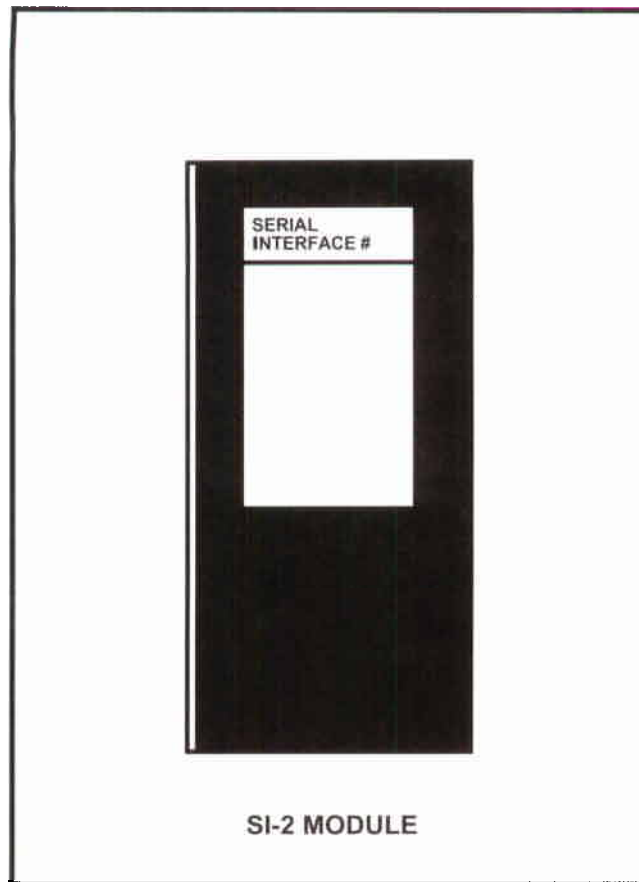


## GENERAL

The SI-2 serial interface module provides (2) power limited and supervised (4) line data/power links for interfacing system control and system status of the MPC-2000 fire alarm control unit with up to (8) remote annunciator/controller/driver units. Each data link is capable of driving up to (4) remote units over distances up to 2000 ft. The true multiplex data transmission format of the SI-2's drive circuits allow total flexibility in wire runs to and between the MPC-2000 control panel and the remote unit.

## DESCRIPTION

The function of the SI-2 serial interface module is to provide a means of connecting remote annunciator/control/driver units to the MPC-2000 fire alarm system control unit. The SI-2 module provides (2) independent drive circuits for the remote display and control units. Each consists of a power pair and a transmit/receive pair of wire connections. The SI-2 module supervises these connections and reports a trouble condition to the CU-2 main control module within the MPC-2000 panel should an open or short occur on the lines.



## TECHNICAL DATA

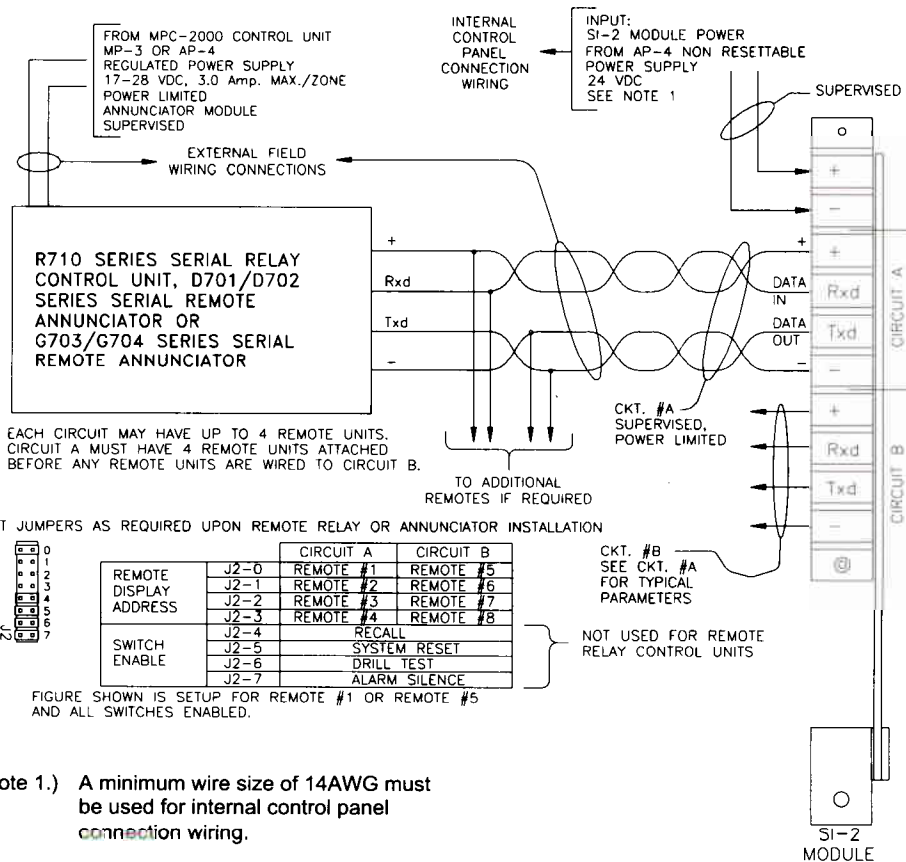
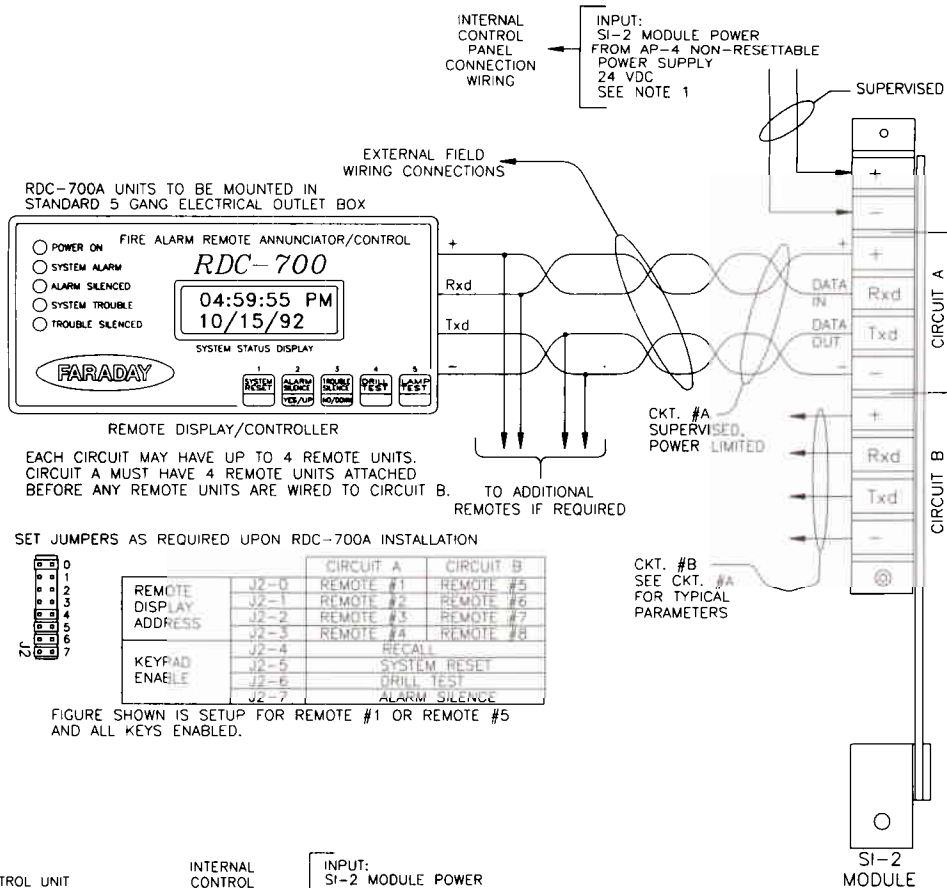
- Power Provision:** None
- Power Consumption:** Alarm - .200 Amp @ 24 VDC Reg.  
Standby- .050 Amp @ 24 VDC Filt/Reg.
- Space Provision:** None
- Space Consumption:** (1) Module space
- Channel Provision:** None
- Channel Consumption:** (1) Module on the parallel channel

## ORDERING INFORMATION

Model #	Part #	Description
SI-2	401339	Serial Interface Module

## SI-2 WIRING

FARADAY MPC-2000 FIRE ALARM SYSTEM CONTROL UNIT - OPTION SI-2



Note 1.) A minimum wire size of 14AWG must be used for internal control panel connection wiring.

**WARNING** - The information contained in this document is intended only as a summary and is subject to change without notice. The devices described in this document have specific instruction sheets which cover various technical, limitation and liability information. Copies of these instruction sheets and the General Product Warning and Limitations Document, which also contains important information, are provided with the product and are available from the Manufacturer. Information contained in these documents should be consulted before specifying or using the product. For further information or assistance concerning particular problems contact the Manufacturer.